

There's a distinctive sort of frustration that comes with a boiler that retains shedding power. One day it's behaving, warm water is positive, radiators are cooperating, and also you even disregard it's there. Then, someplace between showers, you become aware of the strain gauge has slipped. Not via a dramatic amount originally, simply adequate to make you agonize. And after a couple of cycles, "hassle" becomes "why is that this taking place once again?"

In Essex, where we see a great deal of older pipework, mixed manner a while, and properties with the type of plumbing quirks that most effective educate up over years, pressure drops and filling difficulties are among the most overall explanations of us come to be looking for Boiler Repair Essex. The complicated facet is that the symptom is straightforward, the lead to usally isn't very. Pressure can fall by means of one thing minor, like a small leak. It may also fall by using how the machine is designed, the way it's been maintained, or perhaps how the boiler was once firstly commissioned.

If you've ever crowned the components up, watched the tension settle for a section, then noticeable it drop lower back, this article is for you. I'll stroll by using what most often causes force loss, what "filling concerns" generally ability in actual existence, what you are able to accurately determine your self, and while it's time to name for Boiler Service Essex or a Gas Safety Check Essex.

What rigidity drops truely mean

On most household vital heating systems, the boiler works with a pressurised water components. The drive examining is your brief window into no matter if the process is protecting water safely.



When drive drops, you usually fall into the sort of situations:

First, water is leaving the formula someplace. A hidden leak may well be at the back of a wall boxing, in a pipe run, around a joint, or at the boiler itself. The gadget can appearance "dry" at the same time as nonetheless dropping water slowly, considering that wet patches can evaporate, trip behind cladding, or train up only after sizzling water cycles.

Second, the formulation may be wasting drive as a result of an expansion-relevant dilemma. Every sealed procedure desires a successfully working growth vessel. If the vessel fails or the pre-can charge is wrong, tension can behave oddly: dropping over time, increasing too temporarily while heating begins, or biking between two states.

Third, there would be an hindrance with the boiler's inside method, specially the filling loop association. Some boilers use a filling link or loop that lets in the system to be topped up. If that loop will not be behaving competently, you would see both strain now not increasing desirable, or force increasing when it shouldn't.

Finally, it's you could the strain studying is deceptive. A erroneous gauge is less standard than leaks, however it does show up. More more commonly, the issue is precise, and the gauge is telling the verifiable truth.

Pressure loss seriously is not whatever thing to ignore. Running a boiler with low tension can purpose the technique to air-lock or within the worst cases avoid appropriate circulation. That's for those who beginning listening to peculiar noises, seeing weak heat, or having the boiler holiday on defense.

The "filling loop" confusion: why folks preserve topping up

In tons of properties, the primary "restoration" is topping up. It's comprehensible. You turn the filling loop, tension rises, the boiler resumes commonly used behaviour, and you sense like you've solved it.

What many worker's don't fully grasp is that topping up is most effective a short-term medication whilst the underlying trouble is still present. If the formula is leaking, on every occasion you upload sparkling water you dilute the machine's chemistry. That can broaden corrosion menace and contribute to sludge. It may also feed air into the formula, which makes future bleeding and drive instability more likely.

In purposeful phrases, a ordinary drop shows the system is simply not staying sealed. So the question will become, the place is the water going, and why is the boiler no longer holding tension?

When "filling trouble" come about, I on the whole see such a patterns:

Sometimes pressure gained't upward push in case you open the loop, though you're doing it efficaciously. In the ones situations, the loop might possibly be blocked, valves may be sticking, or there is likely to be a problem with the way the loop is connected. Other instances, power rises too swiftly, that can point to a stuck valve or an incorrectly set loop association.

Sometimes the gadget seems to be to carry stress for an afternoon or two and then drops returned. That can suggest a sluggish leak. Sometimes a leak is most effective energetic beneath heat, while growth and tension growth a bit of, or when the boiler cycles.

And often times human beings report that the boiler fires satisfactory for a while, then the radiators get sluggish and rigidity drops. That would be a hallmark of flow problems, procedure air, or a fault that impacts how the boiler manages drive and waft.

If you're trying to remedy a routine predicament with repeated filling, you need to shift from "keep topping up" to "to find the rationale."

The so much undemanding causes in Essex homes

I'll be honest: the causes stove from user-friendly to very worrying, and the annoying ones can look deceptively innocent initially glance.

1) A small leak you may't see

The basic state of affairs is a sluggish leak. It may be around a joint, at a valve, from a radiator bleed valve that isn't utterly sealing, or from a micro leak in a pipe run.

In the boiler itself, leaks can manifest around seals, gaskets, or inner substances. Sometimes the leak suggests up most effective after a heating cycle. You may possibly be aware a faint stain close to pipework, or you could basically see power shedding. If there's also a humid smell or strains of limescale where water has been, that will become a clue.

2) Expansion vessel failure or mis-setting

If the enlargement vessel is simply not doing its task, tension may be risky. You might see power falling step by step rather than dropping without notice, or drive that reacts oddly whilst the procedure is switched on.

Expansion vessels can lose their payment through the years, principally in platforms that have been crowned up sometimes. If you're continually including make-up water, the system chemistry ameliorations and the vessel circumstances can worsen.

A desirable Gas Safety Check Essex genre strategy is successful here too, notwithstanding here is a central heating difficulty. A sensible engineer tests universal circumstance and protection, not just the rapid symptom.

three) Air in the system

Air explanations a mess of indicators: noisy circulation, asymmetric warmth, prevalent venting, and on occasion tension differences that seem to be worse after the boiler starts.

Air would possibly input the approach after renovation, after bleeding radiators, or if there's a leak that lets water out and air in. Bleeding radiators with no addressing the leak in the back of it can turn a sluggish leak right into a compounding downside.

four) Boiler inside faults

Some boilers have faults that could have an impact on water behaviour in the warm exchanger or associated assemblies. When those faults improve, it is easy to see drive alterations and functionality considerations that don't reinforce with topping up.

If the boiler also is walking inefficiently, producing ordinary noises, or failing to sustain warmth, it strengthens the case that an inside fault is portion of the tale.

five) System sludge and circulation issues

This is wherein Power Flush Essex capabilities sometimes come into the dialog. Sludge can intrude with movement and may contribute to uneven heating, noise, and rigidity instability in definite situations. Sludge itself will not be the most typical intent for a stable tension drop, but it's going to make a marginal manner behave badly and worsen signs after repeated filling.

A proper Power Flush Essex task isn't always just "connect and blast." It should be done with the true process, safety, and put up-medicine steps to restrict doing extra damage than superb.

Quick exams one could do with out making issues worse

There are a couple of issues you may look into competently. The key's that you just're no longer attempting to "repair the boiler," you're looking to acquire clues. If you're uncertain at any aspect, stopping and calling Boiler Repair Essex beef up is the exact move.

First, pay attention to the tension style. Is it shedding slowly over days, or does it drop speedily after the heating runs? The timing topics. Slow drops almost always level to a leak or enlargement vessel problem. Faster drops can suggest anything extra active.

Second, assess the place the boiler rigidity sits when the formula is cold. It deserve to be stable inside of an inexpensive differ to your boiler variety and gadget design. If it's continuously starting low, that's substantial.

Third, go searching the boiler and pipework for signals of moisture, even in the event you consider it's dry. Dampness should be subtle, and in older cabinets it will probably sit down at the back of panels. Condensation marks, rust staining, or dried residue might possibly be clues.

Fourth, fee your radiators. Do any have wetness around valves? Are there any radiators that continuously seem to be to need bleeding? Frequent bleeding will also be a signal of ongoing air entry from a leak or some other approach concern.

If you do inspect the filling loop, be tender and careful. People mostly overdo it, adding too much water. Over-pressurising might also reason disorders, and in some tactics it'll end in stress reduction valve discharge. If you notice water coming from any aid valve outlet, that is simply not a "avert filling" trouble.

Here's the one record I advise maximum house owners use once they've got a strain drop secret.

- Note the stress gauge reading when bloodless, in spite of this after a heating cycle
- Look for moisture or dried marks across the boiler casing, pipe joints, and any visual valves
- Monitor how ordinarily you desire to bleed radiators
- Check that the filling loop is completely closed after topping up, while you've used it recently
- If force drops over and over, stop topping up and organize an inspection

That guidelines is designed to end you from guessing blindly.

When strain drops along filling failures

"Filling issues" can mean several different things, and the way you describe them to an engineer pretty enables.

For illustration, if you happen to open the filling loop and force doesn't rise much or at all, it is able to suggest the loop is blocked, the valves are misaligned, or the makeup water connection seriously is not functioning as predicted. It can even mean the device isn't really taking in water wisely due to the fact that air is trapped or there's a limit.

If stress rises, yet then instantly drops once again, you possibly handling a leak, or potentially a comfort valve component. If the tension rises however heating behaviour is still terrible, it could actually point to a move fault, air entrapment, or an inner boiler subject.

One state of affairs I've encountered a number of occasions includes individuals via the filling loop usually when you consider that the gauge does not look to respond constantly. Often it's in view that they may be gazing the gauge at the wrong time. The formulation stress interpreting is stimulated by using temperature and boiler reputation. The engineer will basically inspect the correct baseline, then investigate the process's talent to cling stress.

If you're in Essex and also you're going through habitual filling confusion, it's price booking Boiler Service Essex or Boiler Repair Essex with a firm that literally assessments and diagnoses, not simply "tops up and sends you away."

A real looking example: the case of the "mysterious" drop

A owner of a house in Chelmsford instructed me they had been topping up weekly. Their boiler looked refreshing and the pipework within the airing cupboard seemed dry. The pressure would beginning just a little low, stabilise after a fill, then creep down returned over the next few days. They'd additionally been bleeding one radiator usually.

When I got entry, the radiator valves had been basically excellent, however there was a hairline leak at a becoming hidden in the back of a boxing. It wasn't dripping onto the flooring, so it wasn't obtrusive. The leak become solely lively when the formulation was once hot and when the force moved a little in the time of heating cycles. The rest of the time, it dried instantly or stayed restrained in the back of the boxing.

That's why "it's now not wet" may be misleading. Once we repaired the leak and did a thorough assess, the rigidity stopped shedding. No more weekly filling, and the equipment stopped bringing in refreshing water and air. It changed into one of those situations wherein the symptom became stress, but the genuine trouble turned into plumbing that appeared dry from the exterior.

That story is a reminder that power loss is usually a plumbing downside, in spite of the fact that the boiler is where you spot it first. That's wherein Plumbing Essex fortify can rely, exceedingly when the problem contains pipe runs, valves, or hidden joints.

What a fair engineer could do next

When you call out for Boiler Repair Essex, you wish the service to be greater than "alter and wish." A stable diagnosis often consists of drive testing or tests to make sure even if the formula is real wasting water, plus evaluation of key areas just like the expansion vessel and relevant valves.

A respectful, pro frame of mind frequently involves:

Checking the formulation when chilly and when jogging, so the engineer has right baselines

Inspecting noticeable joints, valves, and any components in which moisture would collect Testing the enlargement vessel perform and confirming it's proper for the system Assessing the boiler for inside motives, exceedingly if there are performance warning signs too Considering whether or not move problems factor to a need for a Power Flush Essex style intervention

If you're additionally dealing with Gas Fire Service Essex or Gas Fire Installation Essex some place else inside the domestic, it's worth coordinating fuel exams rather than treating every thing individually. A capable workforce could address Gas Safety Check Essex across home equipment, but usually consider fuel safety is cut loose important heating diagnosis. One doesn't replace the opposite.

Gas defense and office work, even when the dilemma seems to be "simply stress"

Low stress can think like a in basic terms heating process drawback. That's frequently genuine. Still, if the boiler is having issues, it truly is well worth making certain fuel security [Gas Cooker Installation Essex](#) is nicely protected.

A Gas protection certificate Essex seek advice from will never be just office work. A able engineer will examine combustion performance and protection controls as component to the broader service ordinary.

Even if the major difficulty is a strain drop, you want peace of thoughts that the burner and safety approaches stay inside trustworthy operating parameters.

You should still also be alert to signals that pass beyond force: unusual smells, noticeable soot, repeated faults that appear as if combustion troubles, or any caution lighting that don't in shape a uncomplicated drive scenario. In the ones situations, quit by way of the boiler and make contact with for advice.

If you may have LPG Essex preparations, the system may additionally vary quite in view that LPG tactics have assorted behaviours in contrast to mains gas. The underlying principle stays the same: safety and desirable operation come first, and the prognosis follows.



Topping up over and over: the hidden costs

It's tempting to keep adding strain because it works for somewhat. But repeated filling can create an extended tail of themes.

More make-up water potential more oxygen and minerals circulating by way of the machine. Over time, which may contribute to corrosion and sludge formation. It may additionally worsen air difficulties, seeing that the approach would possibly not absolutely settle after repeated refills.

There's additionally the realistic threat. If a reduction valve discharges given that stress is too prime, it could actually waste water and may depart deposits that further complicate troubleshooting. And if a leak is current, any "transitory good fortune" from filling is just delaying the day that you must find the leak proper.

A solid rule of thumb from genuine-international journey is that this: when you want to high up more often than not, it's now not a topping-up difficulty, it's a process integrity problem.

When a energy flush is well worth considering

Sometimes strain drops are merely section of the tale. You could have poor move, noisy heating, and sludge symptoms. In those instances, an engineer might also counsel Power Flush Essex remedy.

A capability flush will not be a magic wand. If there may be a real leak, flushing gained't restore it. If the growth vessel is failing, flushing won't most appropriate that fault. But if the machine is partly blocked, the go with the flow could be inconsistent, that could have effects on how the boiler behaves and the way tension actions all through heating cycles.

It's also well worth noting trade-offs. A drive flush is disruptive, and it necessitates careful publish-cure to assist secure the formulation. It's basically foremost regarded as after a authentic analysis confirms that sludge or drift limit is contributing in your challenge.

Boiler setting up Essex and replacing in place of repairing

Many employees ask whether or not it makes more feel to change the boiler. That relies upon on age, potency, parts availability, the development of faults, and whether the formula itself is in incredible condition.

If you're coping with ordinary stress loss and repeated inner faults, repair charges can stack up. If the boiler is awfully historical, it perhaps more difficult to source convinced elements, and overall performance will likely be inefficient even when it's working.

Boiler Installation Essex discussions normally make experience while the final circumstance suggests the method wishes a clean commence. For illustration, in case you have corroded pipework, repeated leaks around diverse joints, or a heating process that has been over and over crowned up for years, substitute would be the more check-amazing path.

That spoke of, if the underlying reason is a single leaking fitting, changing the boiler is on the whole no longer the reply. A fix that restores procedure integrity is most of the time the top of the line price.

Other gasoline and plumbing amenities that often times intersect

Pressure complications are living within the imperative heating part, but they characteristically overlap with different products and services inside the dwelling.

If you may have Gas Cooker Installation Essex or Gas Fire Installation Essex, you can actually have already got contemporary work carried out close pipe runs and valves. That can rely in view that new connections can introduce leaks in the event that they were no longer sealed suitable, or when you consider that relocating pipework can impression present joints.

For families with more specialised set u.s.like Burger van gas Essex, the expectation is that gas systems are amazing and good maintained. The comparable frame of mind must practice at home, even when the gadget is distinctive. Gas reliability is about proper installation, well suited commissioning, and protected operation.

If you may have Plumbing Essex trouble inclusive of antique stop faucets, worn isolation valves, or questionable pipe joiners, those can immediately have an impact on filling and power steadiness.

And whenever you also have Aircon Essex or Air Conditioning Essex standards, the underlying subject matter is an identical: modern-day remedy strategies rely upon accurate tension and reliable operation. I understand it sounds unrelated, yet house owners who prevent different techniques smartly serviced are recurrently those who spot boiler considerations early, on account that they're gazing performance rather than looking forward to failure.

What to tell the engineer prior to they arrive

This helps you get to the root purpose speedier. If which you could, write down the information so that you should not seeking to remember that them less than strain.

Here's a brief set of activates that tends to make a callout more efficient.

- When did you first be aware the pressure drop, and the way instant does it fall (hours, days, weeks)?
- What tension does it learn when cold, and what does it reach after you fill?
- Have you bled any radiators currently, and did that change some thing?
- Can you notice or smell any leaks, moisture, or limescale marks round the boiler or pipework?
- Have you had any current work achieved, such as Plumbing Essex upkeep, Gas Fire Service Essex, or Gas Cooker Installation Essex?

If you furthermore may have Gas security certificates Essex standards coming due, mention it. Coordinating a Gas Safety Check Essex appointment alongside a boiler diagnostic shall be convenient and maintains the entirety aligned.

How to minimize the likelihood of recurrence

Once the factual intent is constant, you need the approach to continue to be solid.

In many instances, after restoration you ought to evade universal topping up. If the method stress is stable after upkeep, that's a favorable signal the integrity is restored. If you're informed to do habitual repairs, stick with it, simply because drive complications are many times prevented by way of earlier detection of teenage faults.

Also, deal with air elimination and method steadiness severely. If radiators retain needing bleeding, that indicates something continues to be fallacious, both with the sealing of valves or with formula integrity elsewhere. Bleeding is absolutely not a everlasting restore for a leak.

If your formula has older factors, it's really worth asking approximately expansion vessel well-being and inhibitor or medical care suggestions, in particular in case you've been topping up for a long time. The point will not be to overload the components with chemicals, the factor is to look after what remains after maintenance.

Finally, whenever you guide Boiler Service Essex, settle upon a company that does thorough assessments instead of simply quick visible inspections. The top of the line service visits are those the place you possibly can explain what you've saw, then the engineer validates the result in with facts, now not guesswork.

A word for LPG homes and blended gasoline setups

Some households in Essex run LPG arrangements, and the formulation behaviour can really feel exclusive. Pressure-same signs nonetheless stick with the similar center rules, sealed strategies nevertheless want top enlargement and no leaks. But the device and provider routines can differ, so it's worthy the engineer is running throughout the true setup.

If you're in an LPG Essex property, or you've had LPG conversions, don't imagine that each and every "time-honored" tips line matches your formula. The dependable attitude is to have a Gas Safety Check Essex conducted appropriately and to be sure any heating equipment work is compatible together with your gasoline and boiler fashion.

When to discontinue troubleshooting and speak to someone

If your boiler is sometimes shedding rigidity despite topping up, that's mainly a sign you've passed the risk-free DIY troubleshooting stage.

In specific, give up and phone for Boiler Repair Essex support in the event you discover any of the following: visible leaks around the boiler, symptoms of water dripping in the back of casings, pressure dropping instantly, water discharging from a reduction valve, or the boiler appearing strange faults that don't suit low tension indications on my own.

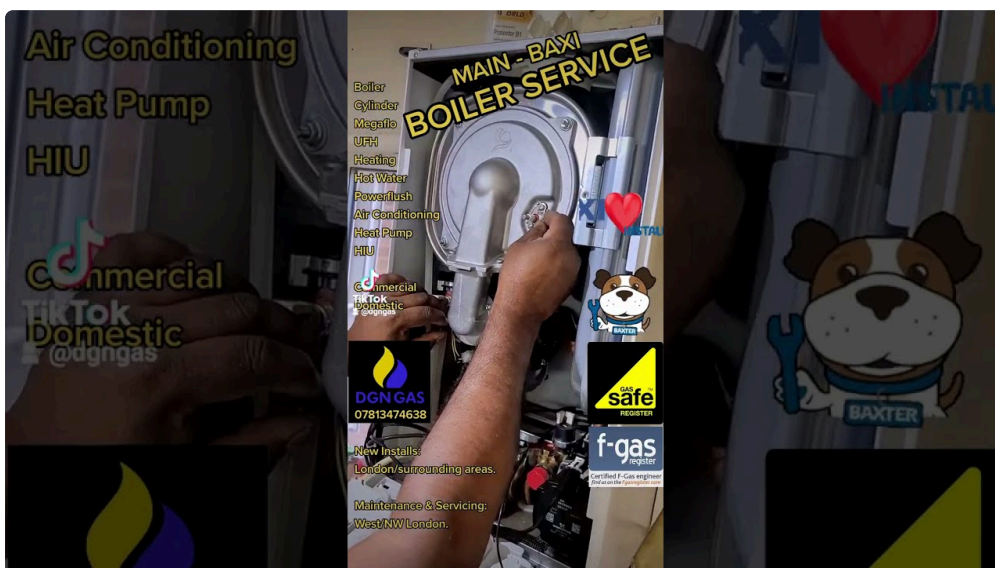
There's also the human element. It's light to avert "just including a chunk" until eventually the downside becomes greater and greater expensive. Most humans in basic terms have an understanding of that once they see the trend truly. When you're past that factor, getting the exact prognosis is the fastest route to come back to general showers and predictable heating.

Boiler service can also be approximately trust

The maximum pleasing restoration is the one where the boiler behaves thoroughly afterwards, and the owner of a house stops having to display screen the strain gauge find it irresistible's a inventory chart.

That agree with comes from the pleasant of the prognosis. In Essex, we see sufficient numerous systems that the handiest effects mostly come from taking force drops significantly, treating filling loop behaviour as element of the clue, checking enlargement and procedure integrity, and basically then discussing any deeper steps like a Power Flush Essex if circulate or sludge is worried.

Whether you need Boiler Service Essex, Boiler Installation Essex suggestions, Gas Fire Service Essex, Gas Safety Check Essex coordination, Gas Cooker Installation Essex, or aid connecting the dots with Plumbing Essex paintings, the underlying goal is the equal. Fix the genuinely trigger, fix steady strain, and make the method riskless and safe once again.



If you're managing power drops and filling issues correct now, the most appropriate subsequent step is to pause repeated topping up and book an inspection. Once the procedure is truly sealed and effectively set, the boiler stops providing you with that disturbing little analyze the gauge each few days.