

A bigger domestic has a the various rhythm to it. More bathrooms, longer pipe runs, upper warm water demand at extraordinary hours, and the occasional "why is the strain shedding lower back?" moment when a moment shower is turned on downstairs when an individual else is running the dishwasher. In that style of setup, the boiler collection things, no longer just for comfort but for the way reliably your procedure behaves whilst a couple of taps and showers are pulling on the related time.

A procedure boiler is usually a quality are compatible as it's designed to work with a sealed central heating equipment and to store warm water in the cylinder. That cylinder acts like a buffer, so you get steadier warm water availability for a number of outlets with out the boiler invariably ramping up and down. When a process is sized and commissioned precise, you'll be able to sense the difference inside a day.

Below is how I'd ponder system boiler setting up for higher houses, what can go flawed if it's dealt with like a like-for-like change, and the way boiler carrier, boiler fix, and regimen assessments shop everything operating easily over time.

Why "higher space" changes the boiler conversation

In a smaller domestic, most boilers spend their time doing gentle paintings. They heat water for one bathe, per chance a bath, then relax. In a bigger home, the load is less predictable. You may possibly see:

- simultaneous scorching water calls from lavatories and utility rooms
- longer pipe runs, notably to a loft or some distance end of the property
- a much bigger heating community, with extra radiators and more valves
- greater warm losses if insulation is older or uneven

Those components don't automatically make a machine boiler "the simplest solution," but they do shift the priorities. You need satisfactory output, clever controls, proper pipework design, and a heating and scorching water formulation which can improve without delay after demand.

The true-international tell is more commonly comfort lawsuits. A boiler that struggles in a massive domicile won't fail utterly. It may additionally simply give lukewarm water for the 1st jiffy, take longer to respond after you switch a faucet off, or result in cycling that sounds harsh and shortens ingredient existence.

I've been often known as out to "boiler breakdown" instances in which the boiler wasn't in actual fact broken in the dramatic feel. It used to be doing what it can, however the set up and device sizing were by no means meant for the cutting-edge design or utilization patterns. That's why a suited deploy plan beats a quick switch.

System boiler fundamentals, explained using scorching water demand

A formula boiler heats water and retailers it in an insulated cylinder, then gives you it to your taps and showers. That capacity the boiler can awareness on keeping up hot water on the top temperature within the cylinder, while the cylinder presents the speedy draw-off when a bathroom calls for warm water.

In a bigger dwelling house, this things seeing that the recent water draw is hardly one man or women at a time. Even with careful relations conduct, demand stacks. A gadget boiler plus cylinder has a tendency to deal with that stacking better than a few selections, distinctly in which showers run for longer or you will have established kitchen use plus loo demand.

It additionally offers you choices for controls. If your private home is hooked up for zoning or when you've got time schedules that healthy day after day workouts, the gadget may be balanced so that you don't warmness unused house when people are at paintings. That balance reduces stress at the boiler and supports constant efficiency.

Sizing: the element many installs get wrong

The greatest mistake I see is sizing done merely around postcode averages or a like-for-like assessment. Larger residences basically have diversified realities now than while the earlier process used to be set up. Loft conversions, en-suite additions, greater radiators, new bathroom fittings, or perhaps adjustments in how of us use water can carry call for with no all and sundry updating the boiler plan.

When I length a procedure boiler installation true, I glance beyond the boiler model. I take into consideration radiator output and distribution, pipe lengths, cylinder capacity, and the expense at which hot water is drawn across the day. If the cylinder is too small on your trend, you will get "recovery lag," where hot water runs out sooner than predicted and then takes time to fill up. If the output is mismatched, the components can conflict to take care of temperatures, and that's when breakdowns and repeated boiler fix jobs seem to be.

A difficult rule of thumb is that higher demand needs stronger suit. But "bigger healthy" seriously isn't just brute pressure with a bigger boiler. A desirable commissioned method is frequently the candy spot, the place the boiler runs correctly and doesn't combat the heating and plumbing design.

Pipework, stress, and the unglamorous stuff that makes or breaks performance

On paper, boiler installing sounds simple: mount the unit, connect gas and water, fit flue, cord controls, fee, accomplished. In bigger properties, the pipework tells the story.

Heating circuit considerations

If your technique has older pipework, repeated maintenance, or an doubtful background, I always take a close look. Debris in radiators and pipe runs can shrink warmth move, forcing the boiler to work tougher. That continuously exhibits up as choppy temperatures, cold spots on express radiators, or a boiler that fires extra routinely than it must always.

This is where a Power Flush can transform significant. A Power Flush is absolutely not a magic notice, yet while it's terrific, it is able to fix drift and recuperate warmth distribution. If you skip it while the process is dirty, you can get chronic troubles that look like "boiler breakdown" but are without a doubt hydraulic issues in cover.

Hot water efficiency considerations

Hot water pipework design affects temperature consistency at the taps. Longer runs can quiet down the water line whilst ready for decent water. Insulated pipes, good valve alternatives, and clever cylinder settings can guide.

In greater houses, you furthermore may would like to forestall growing circumstances the place thermostatic blending valves and cylinder temperatures combat both other. When these settings aren't coordinated, you could finally end up with fluctuating temperatures at showers, which workers trip as unreliable sizzling water rather than a selected technical fault.

Gas security and the half you deserve to certainly not deal with as optional

Any manner boiler set up includes gas paintings and requires cautious compliance. A able engineer will perform a Gas Safety Check as a part of commissioning, make sure reliable operation, cost for leaks, take a look at combustion overall performance, and thing the proper documentation in which required.

If you're fitting a brand new boiler or replacing a primary portion, you should always are expecting acceptable checks to be accomplished and recorded. In many families, a Gas Safety Certificate is a key record, exceptionally in which landlord responsibilities observe, but it's also simply marvelous apply for owners who want a clear rfile of what became achieved.

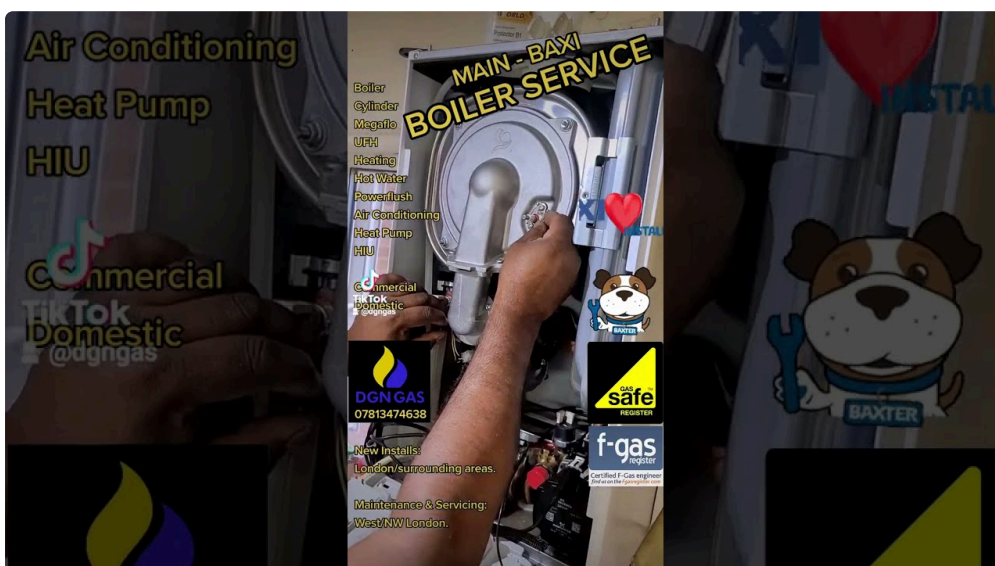
If your private home makes use of LPG, you also desire the deploy to be important for the fuel category. LPG strategies can behave otherwise in phrases of burner settings and provide preparations, and the inaccurate assumptions can result in inefficient burning or repeated flame matters. I've viewed trouble wherein a person assumed the identical attitude as a pure gasoline setup. That's in which you lose time, and potentially peace of brain.

Controls and comfort, no longer just sizzling water

Bigger homes tend to want better taken with controls. It's no longer merely about having a thermostat. It's about the manner the boiler responds to demand throughout the property.

If you've got diverse bathrooms, you possible value predictable shower performance. If you will have radiators on one-of-a-kind flooring, you would like balanced heating so upstairs relief isn't done by way of overheating down. Controls assistance the boiler run inside a strong envelope in preference to chasing fluctuating calls.

I many times discuss to families who describe the sensation of "the area can't come to a decision." It's a terrific word. When heating schedules overlap with scorching water usage and the gadget will not be tuned nicely, the boiler can look erratic. That can diminish performance and, in a few cases, building up the danger of faults.



A smartly-designed technique with accurate regulate settings reduces put on. It's one of these unsexy truths: much less cycling, steadier operation, fewer triggers for elements to fail early.

What the install procedure looks like in a bigger property

The install itself is merely one segment. The better task is getting every thing competent so the boiler runs in fact after the engineer leaves.

A frequent process, executed nicely, comprises website online exams, process contrast, and planning for pipework and flue routing. In some properties, the perfect direction for a flue is blocked by format or different offerings, so that you would possibly want careful positioning to meet protection requisites and keep unsightly compromises.

There also can be interplay with latest plumbing. Some families have older pipework manifolds, completely different stopcock arrangements, or preceding modifications from previous plumbers. In a bigger dwelling, the ones legacy alternatives can count number.

While the boiler task is underway, it's undemanding to coordinate with plumbing paintings if valves, pipe supports, or cylinder connections want updating. In the appropriate situations, the whole lot is deliberate so that you're now not looking ahead to "one extra factor" formerly commissioning.

And if you happen to're additionally coping with air-con or air conditioning installation, that's a separate gadget with separate electrical and refrigerant considerations, yet it could possibly overlap with making plans. Space, pipe runs, and electric ability can changed into intertwined. I've obvious properties the place the air-con wiring plan accidentally got rid of alternatives for the place to course shrewd cables for heating controls. It's no longer a cause to evade air con, however it really is a reason why to coordinate early.

Common topics I see after "winning" swaps

Even whilst a boiler installing appears to be like wonderful at the jump, large properties can disclose vulnerable elements quickly. The so much undemanding problems I see fall into some buckets.

1) Poor equipment balance

After install, a few radiators heat shortly and others continue to be stubbornly cool. It's as a rule a blend of balancing, pipe float prices, and radiator valve conduct. The boiler can't restore a flow trouble.

2) Incorrect cylinder sizing or settings

If the cylinder is too small for the domestic sample, sizzling water will really feel "pleasant" for the primary use, then it disappoints later. If cylinder temperature settings aren't tuned, it is easy to also prove with severe reheating cycles.

3) Debris and circulation restrictions

If you didn't tackle the gadget circumstance, you can get blockages or decreased efficiency. That's while Power Flush turns into a communique, and while later Boiler Repair expenditures seem to be given that the signs hold coming to come back.

four) Fluctuating burner behavior or sensor issues

Sometimes the problem is commissioning. Sometimes it's venting or condensate dealing with. In large buildings with long pipe runs or more advanced layouts, small facts can count number.

5) Fuel or delivery issues, peculiarly LPG

LPG supply arrangements can range, and if burner settings aren't the best option, possible understand inefficiency, faults, or repeated shutdowns.

These considerations aren't guaranteed, but they're accepted ample that I deal with formula planning as the foremost event.

Related gasoline paintings other people most often package with boiler projects

It's truly undemanding for house owners to package fuel-linked updates when they're already having a new boiler put in. If you're exchanging kitchen layouts, replacing appliances, or enhancing defense documentation, the timing could be competent.

For illustration, Gas Cooker Installation is frequently scheduled round the similar period. Gas fires are another standard request, which includes Gas Fire Installation. When you're already organizing gas access and safe practices checks, it's a tight moment to align every part.

There's additionally a more wonderful class that comes up in exact families and small hospitality settings: Burger van gasoline. It's no longer the everyday home request, however I've helped with gasoline defense making plans and enhancements the place transportable catering setups considered necessary a radical procedure. The shared thread is the identical, secure setting up, correct paperwork, and checking out that displays how the system is actually used.

No count number what you're putting in, it's valued at conserving one theory front and centre: the gas paintings ought to be documented, established, and trustworthy, no longer simply "operating ample."

Boiler breakdown signs that your process could be struggling

A boiler breakdown can suggest the rest from a complete lockout to a gradual decline in which the system looks temperamental. In better residences, chances are you'll realize faults sooner due to the fact the components is demanded more ordinarily.

If you're staring at for trouble, right here are the sort of indicators that traditionally deserve cognizance rather than waiting it out:

A boiler that sometimes re-starts off, sizzling water that takes longer to attain temperature, radiators that run chilly in spite of the fact that the thermostat calls for heat, and ordinary noises equivalent to banging or sustained kettling. If you get seen mistakes codes, take note of them, write them down, and don't continue cycling the gadget to "see if it could behave."

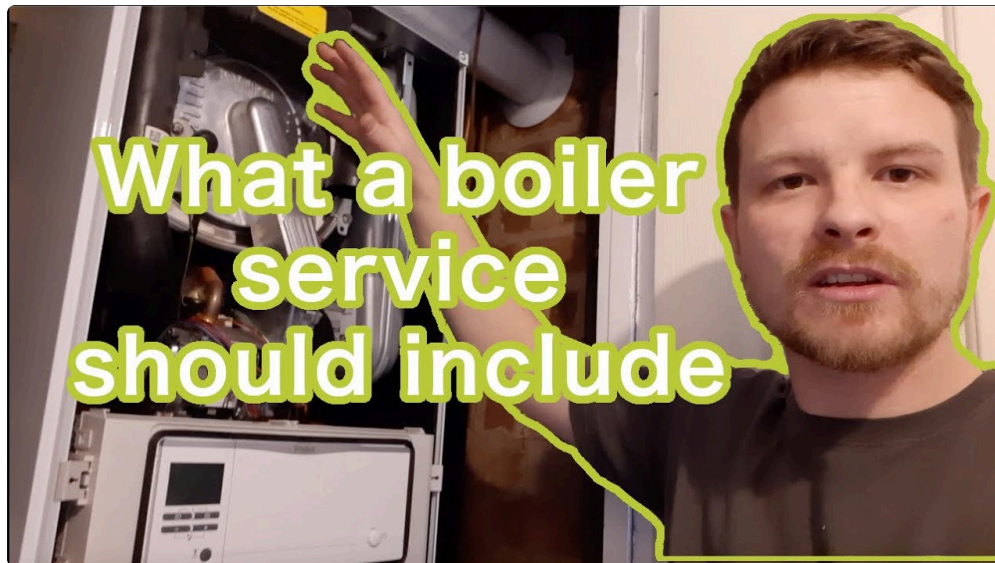
Regular Boiler Service is the most obvious preventative step. It catches put on beforehand it will become a breakdown. It additionally is helping ensure that the boiler is tuned for modern-day situations, which things more in large residences wherein the load profile is heavier.

Maintenance for the lengthy haul in higher households

Once a process boiler is put in, you'll nonetheless have faith in smart maintenance habits. A larger domestic most likely ability more constituents underneath power, greater radiators in use, and more hot water demand. That doesn't suggest you're doomed to constant maintenance, yet it does suggest overlook is less forgiving.

A applicable Boiler Service time table enables maintain combustion overall performance solid and decreases the likelihood of nuisance faults. Boiler Repair, while considered necessary, must always be concentrated founded on diagnostics instead of guessing. In platforms with longer pipe runs and varied toilets, it's additionally less difficult to misdiagnose issues if person focuses simplest on the boiler and ignores the plumbing facet.

I've had calls where the "boiler worry" used to be really a circulation trouble, then the property owner spent money on portions that did not cope with the circulation limit. That's why a decent engineer seems on the entire snapshot, no longer just the handle panel.



Quick decision support: need to you pass procedure boiler?

Not every person demands a procedure boiler, and the proper collection relies on your private home. Still, process boilers are tremendously fascinating in the event you choose sturdy hot water provision for multiple shops and you've a setup that supports a cylinder inside the top position.

If you're taking into account an installation or upgrade, the resolution usually will become clearer if you have in mind these lifelike points in plain language: what number toilets you've got, even if you do simultaneous showers, how your heating is laid out across floors, and whether your latest gadget is smooth and fit.

Here's the quick record I use whilst aiding home owners get orientated, before any specified calculations:

- what number bathrooms and sizzling water retailers you operate at top instances
- how long your hot water lines are and whether temperature is consistent
- no matter if the heating device is cutting-edge or likely full of particles
- whether you're able to accommodate a cylinder accurately and essentially
- regardless of whether fuel kind is normal gas or LPG and what supply is achievable

That's no longer an alternative choice to a acceptable survey, yet it helps set expectations. Larger houses in many instances desire more than a "swap and pass" frame of mind.

Two drive elements to watch in older better homes

Older wide houses might be first-rate, but they at times raise install historical past like baggage you did no longer p.c.. Two rigidity factors broadly speaking come up.

First is process cleanliness. If the heating process hasn't been cared for, sludge and particles can build up over years. That can trigger movement concerns, asymmetric radiator efficiency, and repeated pressure on the boiler. In the ones cases, a Power Flush might possibly be prompt as section of restoring best flow.

Second is pipework and airflow round the plant subject. In greater properties, the boiler position may be in a software cabinet, an airing area, or a loft-adjacent provider field. The area could seem "first-rate" until you comprehend the flue course, air flow specifications, and condensate routing need to paintings reliably for years, now not simply in the time of commissioning.

If you ever sense just like the job is being rushed considering that the cabinet is tight, that's a time to sluggish down and ask questions. Good paintings takes time because it [Boiler Service Essex](#) desires get entry to, safe clearances, and considerate routing.

After set up: commissioning, checking out, and the reality check

The appropriate installs finish with exact commissioning and transparent handover. You may still understand what turned into adjusted, what the nontoxic working parameters are, and what established operation sounds like.

In a bigger home, I encourage laborers to do a undemanding fact determine after the deploy is signed off. Run scorching water at two retailers immediately and notice how the approach responds. Turn on heating upstairs and downstairs all the way through a typical agenda and look at various for any chilly radiators or strange responses. If there's an trouble, the earlier it's stuck, the less complicated it can be to true devoid of ongoing frustration.

You have to additionally get hold of documentation associated to reliable testing, along with a Gas Safety Check file the place desirable. If you desire a Gas security certificates to your drawback, confirm that's equipped and displays the paintings done.

When to name for boiler provider and boiler fix in a large house

With large homes, it's tempting to "deal with because of it" whilst the heating solely behaves badly at convinced times. That can work unless the fault escalates right into a complete lockout.

If your boiler is underperforming in obvious methods, guide Boiler Service. If you've bought an blunders code, routine shutdowns, or signs and symptoms that go back after reset, guide Boiler Repair rather than assuming it will settle.

Seasonal timing facilitates too. If you wait till the coldest week of the year, your treatments and appointment availability are tighter. In a bigger domestic, downtime is greater disruptive on the grounds that you seemingly place confidence in more shops for day-by-day consolation. Scheduling upkeep in milder months in most cases looks like an unfair competencies, mainly for titanic households.

Final idea on importance: consolation, reliability, and less surprises

A process boiler setting up in a bigger home is about greater than deciding on a edition. It's approximately matching the boiler and cylinder to your call for, retaining pipework and water excellent in intellect, and commissioning effectively so the process behaves continually across rooms and peak utilization times.

When it's accomplished effectively, you get stable hot water for showers and faucets, a heating method that warms predictably, and less visits from the "are you able to repair it briskly" emergency mindset. When it's

taken care of like a hassle-free change, the bigger estate customarily will become the component that exposes each and every vulnerable point.

If you're planning an improve, the very best subsequent step is a thorough evaluate that looks at the two your boiler wants and your plumbing fact. That's the place you finally end up with a formula that feels constructed for your house, not simply established in it.